

APPENDIX D-4
Beneficiary Eligible Mitigation Action Certification

BENEFICIARY ELIGIBLE MITIGATION ACTION CERTIFICATION

Beneficiary White Mountain Apache Tribe

Lead Agency Authorized to Act on Behalf of the Beneficiary Office of the Attorney General
(Any authorized person with delegation of such authority to direct the Trustee delivered to the Trustee pursuant to a Delegation of Authority and Certificate of Incumbency)

Action Title:	VW Settlement 1
Beneficiary's Project ID:	VW Settlement 1
Funding Request No.	<i>(sequential)</i> 2
Request Type: (select one or more)	<input type="checkbox"/> Reimbursement <input checked="" type="checkbox"/> Advance <input type="checkbox"/> Other (specify): _____
Payment to be made to: (select one or more)	<input checked="" type="checkbox"/> Beneficiary <input type="checkbox"/> Other (specify): _____
Funding Request & Direction (Attachment A)	<input checked="" type="checkbox"/> Attached to this Certification <input type="checkbox"/> To be Provided Separately

SUMMARY

Eligible Mitigation Action	<input checked="" type="checkbox"/> Appendix D-2 item (specify): <u>EMAs 1 and 2</u> <input type="checkbox"/> Item 10 - DERA Option (5.2.12) (specify and attach DERA Proposal):
Detailed Description of Mitigation Action Item Including Community and Air Quality Benefits (5.2.2):	
Emissions reductions from replacement of aged equipment.	
Estimate of Anticipated NOx Reductions (5.2.3):	
More than 80% based on EPA model results comparing old and new equipment.	
Identification of Governmental Entity Responsible for Reviewing and Auditing Expenditures of Eligible Mitigation Action Funds to Ensure Compliance with Applicable Law (5.2.7.1):	
Tribal Attorney General's Office	
Describe how the Beneficiary will make documentation publicly available (5.2.7.2).	
Tribal non-disclosure waiver as required using Tribal website, noting equipment, program and emissions reducts.	
Describe any cost share requirement to be placed on each NOx source proposed to be mitigated (5.2.8).	
The project will cost \$32,349.01 more than the Tribe's allocation, so the Tribe will cover this additional amount as a cost share.	
Describe how the Beneficiary complied with subparagraph 4.2.8, related to notice to U.S. Government Agencies (5.2.9).	
No federal agencies have expressed interest in the Tribe's Settlement participation.	

If applicable, describe how the mitigation action will mitigate the impacts of NOx emissions on communities that have historically borne a disproportionate share of the adverse impacts of such emissions (5.2.10).

N/A

ATTACHMENTS
(CHECK BOX IF ATTACHED)

- | | | |
|-------------------------------------|--------------|--|
| <input checked="" type="checkbox"/> | Attachment A | Funding Request and Direction. |
| <input checked="" type="checkbox"/> | Attachment B | Eligible Mitigation Action Management Plan Including Detailed Budget and Implementation and Expenditures Timeline (5.2.4). |
| <input checked="" type="checkbox"/> | Attachment C | Detailed Plan for Reporting on Eligible Mitigation Action Implementation (5.2.11). |
| <input checked="" type="checkbox"/> | Attachment D | Detailed cost estimates from selected or potential vendors for each proposed expenditure exceeding \$25,000 (5.2.6). [Attach only if project involves vendor expenditures exceeding \$25,000.] |
| <input type="checkbox"/> | Attachment E | DERA Option (5.2.12). [Attach only if using DERA option.] |
| <input type="checkbox"/> | Attachment F | Attachment specifying amount of requested funding to be debited against each beneficiary's allocation (5.2.13). [Attach only if this is a joint application involving multiple beneficiaries.] |

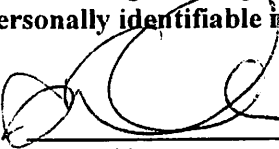
CERTIFICATIONS

By submitting this application, the Lead Agency makes the following certifications:

1. This application is submitted on behalf of Beneficiary White Mtn. Apache Tribe, and the person executing this certification has authority to make this certification on behalf of the Lead Agency and Beneficiary, pursuant to the Certification for Beneficiary Status filed with the Court.
2. Beneficiary requests and directs that the Trustee make the payments described in this application and Attachment A to this Form.
3. This application contains all information and certifications required by Paragraph 5.2 of the Trust Agreement, and the Trustee may rely on this application, Attachment A, and related certifications in making disbursements of trust funds for the aforementioned Project ID.
4. Any vendors were or will be selected in accordance with a jurisdiction's public contracting law as applicable. (5.2.5)
5. Beneficiary will maintain and make publicly available all documentation submitted in

support of this funding request and all records supporting all expenditures of eligible mitigation action funds subject to applicable laws governing the publication of confidential business information and personally identifiable information. (5.2.7.2)

DATED: 08/27/2019



KeAloha Douma, Attorney General

[NAME]

[TITLE]

Office of the Attorney General

[LEAD AGENCY]

for

White Mountain Apache Tribe

[BENEFICIARY]

D4 (pages 2 and 3 detail)

5.2.2

The equipment identified will enable the Tribe to retire other poorly performing equipment from use and also provide ADA compliant passenger transit. Older equipment has been used due to availability despite its poor air quality performance, exposing the community and staff proximate to the units to substantially higher NOx, particulate, and carbon emissions than will be generated from the operation of new, efficient units for the same purposes.

The following equipment will be replaced:

2001 Mack truck	VIN 1M2P270C91M059601
1997 Thomas Built Bus	VIN1T88U4B24V1144051
1993 Bus	VIN 1HVBBPLM0PH471310
1992 Bus	VIN 1HVBBPLM9NH470086

5.2.3 NOx Reductions Estimate

Truck	94% Reduction (EPA DEQ Tool)
Buses	96% Reduction (EPA DEQ Tool)

Annual Results (short tons)	NOx	PM2.5	HC	CO
Baseline for Upgraded Vehicles	0.674	0.038	0.045	0.172
Amount Reduced After Upgrades	0.649	0.037	0.042	0.161
Percent Reduced After Upgrades	95	97.5	95.0	93.0

5.2.7.2 Publicly Available Information

The White Mountain Apache Tribe shall publish on its official government website at <http://www.wmat.us> a public notice for availability for public review of documentation and records: (i) submitted by it in support of each funding request and ii) supporting all expenditures of Trust Funds by the Beneficiary, each until the Termination Date of the Trust pursuant to Paragraph 6.8 of the Trust Agreement. The public notices shall instruct members of the public to contact the Attorney General of the White Mountain Apache Tribe to inspect such records at the Office of the Attorney General at 201 E. Walnut Street, Whiteriver, AZ 85941, between 9 a.m. and 3 p.m. on any regular business day. The release of information will be subject to all applicable laws and policies of the White Mountain Apache Tribe.

ATTACHMENTS B & C

**Detailed Cost Estimates from Selected Vendors
White Mountain Apache Tribe (WMAT)**

First Item: 2019 Kenworth T880 Truck
 Description: Truck for use by Tribal Public Works Department
 Bid amount: \$189,950.00 each.
 Quantity: 1
 Vendor: Inland, Tolleson, AZ. Bid Document Enclosed
 Total: \$189,950.00

Second Item: 2020 CE 77 Passenger Bus
 Description: Passenger Bus for TR School
 Bid amount: \$112,602.01
 Quantity: 1
 Vendor: RWC Group, Phoenix, AZ. Bid Document Enclosed
 Total: \$112,602.01

Third Item: 2019 Allstar XL IC TC 40' ADA Shuttle Bus
 Description: New shuttle bus for Casino complex use
 Bid Amount: \$140,276.00
 Quantity: 1
 Vendor: Creative Bus Sales, Phoenix, AZ. Bid Document Enclosed

Fourth Item: 2019 Allstar XL IC TC 36' ADA Shuttle Bus
 Description: New shuttle bus for Casino complex use
 Bid Amount: \$130,831.00
 Quantity: 1
 Vendor: Creative Bus Sales, Phoenix, AZ. Bid Document Enclosed

Equipment Total: \$573,659.01
Project Total \$ 573,659.01

Budget Overview			
Period of Performance: Funding Cycle 2, November 13, 2019 through May 13, 2020			
Budget Category	Total Approved Budget	Share of total Budget to be Funded by the Trust	Cost-Share, if applicable
Equipment Expenditure	\$ 573,659.01	\$ 541,310	32,349.01
Contractor Support	-0-	-0-	N/A

Subrecipient Support	-0-	-0-	N/A
Administrative	\$ -0-	\$ -0-	N/A
Project Totals	\$ 573,659.01	\$ 541,310	\$32,349.01
Percentage	100%	94.4%	5.6%

***Timeline**

Date	Action	Outcome
November 15, 2019	Payment from Trustee	Funds received
November 30, 2019	Equipment purchased	Items procured
December 30, 2019	Item delivery verification by respective Tribal department	Each department verifies status of order/delivery/payment
May 13, 2020	Report (to Trustee)	Confirms receipt, operation and conformity of equipment.

*(If equipment delivery is delayed past May 13, 2020, Tribe will provide a second report to the Trustee documenting delayed receipt and conformity.)

ATTACHMENT D

Detailed Cost Estimates from Selected Vendors White Mountain Apache Tribe

First Item: 2019 Kenworth T880 Truck

Description: Truck for use by Tribal Public Works Department

Bid amount: \$189,950.00 each.

Quantity: 1

Vendor: Inland, Tolleson, AZ. Bid Document Enclosed

Total: \$189,950.00

Second Item: 2020 CE 77 Bus

Description: Passenger Bus for TR School

Bid amount: \$112,602.01

Quantity: 1

Vendor: RWC, Phoenix, AZ. Bid Document Enclosed

Total: \$112,602.01

Third Item: 2019 Allstar XL IC TC 40' ADA Shuttle Bus

Description: New shuttle bus for Casino complex use

Bid Amount: \$140,276.00

Quantity: 1

Vendor: Creative Bus Sales, Phoenix, AZ. Bid Document Enclosed

Total: \$140,276.00

Fourth Item: 2019 Allstar XL IC TC 36' ADA Shuttle Bus

Description: New shuttle bus for Casino complex use

Bid Amount: \$130,831.00

Quantity: 1

Vendor: Creative Bus Sales, Phoenix, AZ. Bid Document Enclosed

Total: \$130,831.00

Vendor Equipment Total: **\$573,659.01**

Project Vendor Total \$573,659.01



Inland Kenworth Phoenix
8314 W Roosevelt St, Tolleson, Arizona 85353

The White Mountain Apache Tribe, here's your

T880 Quote

Stock # **KJ377302**

Quoted on **7/11/2019**

Your Sales Contact

Marco Ortigoza, Salesman
(602) 258-7791
MOrtigoza@inland-group.com



Specs and Details

Year	2019	Front axle	20,000
Make	Kenworth	Rear axle	46,000
Model	T880	W.B.	256
Stock Number	KJ377302	Sleeper or DC	Day Cab
Engine	Paccar MX-13	Sleeper size	(n/a)
H.P. / Torque	485	Wheels	Aluminum
Transmission	FO16E308LL	Mileage	(n/a)
Trans speed	Ultrashift	Ratio	3.91

Selling Price \$189,950.00

Additional Information

7/11/2019 Price Includes F.E.T., The truck will get a CB and Floor mats Installed.



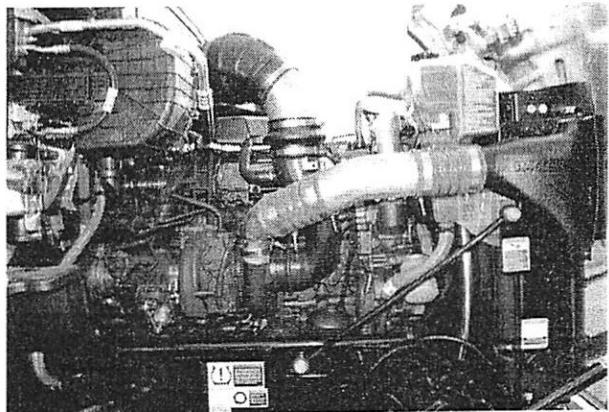
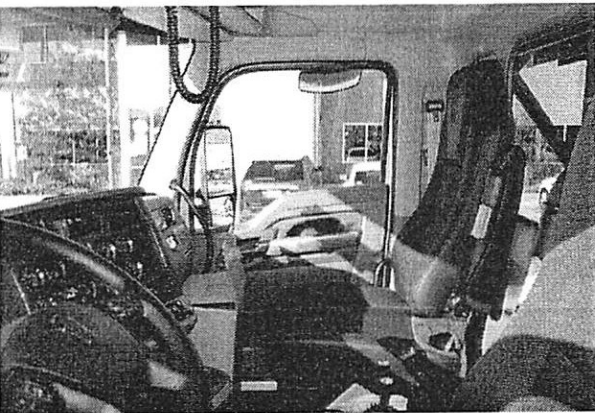
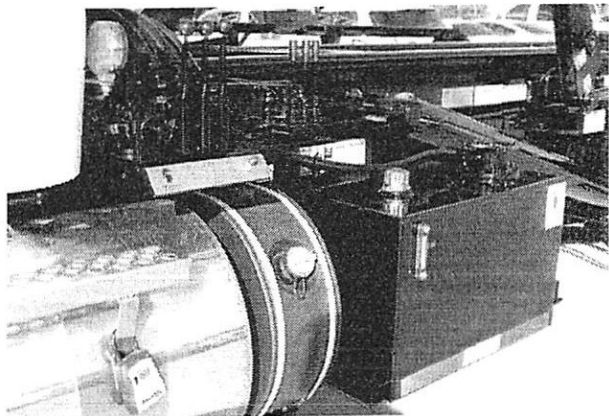
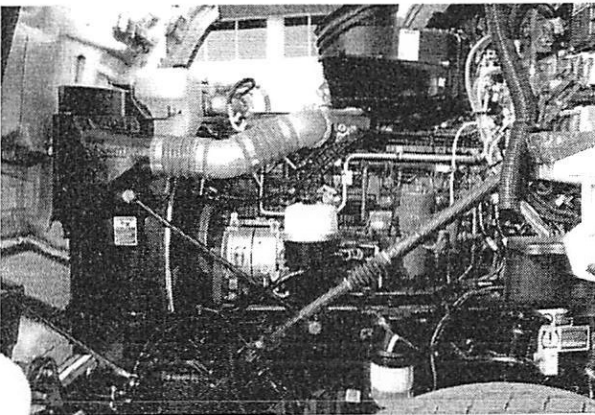
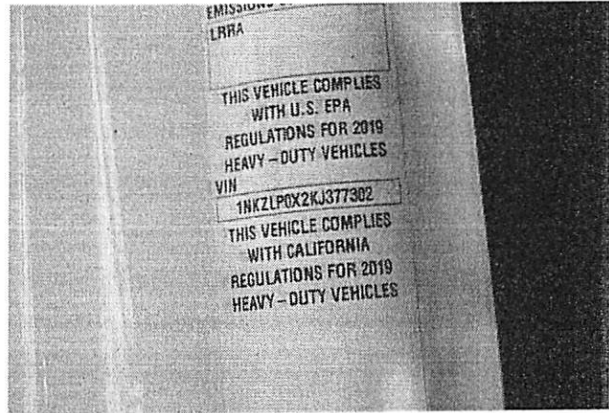
Inland Kenworth Phoenix
8314 W Roosevelt St, Tolleson, Arizona 85353

The White Mountain Apache Tribe, here's your

T880 Quote

Stock # KJ377302

Quoted on 7/11/2019



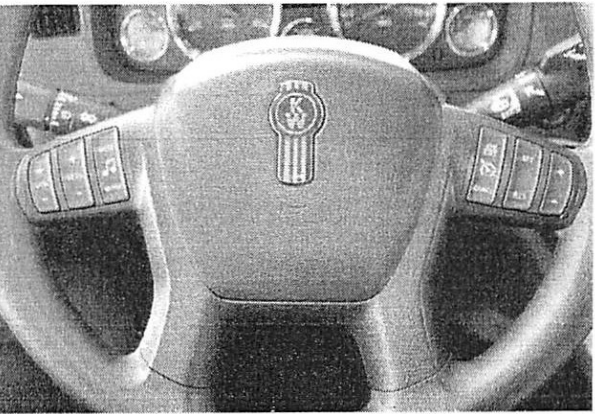
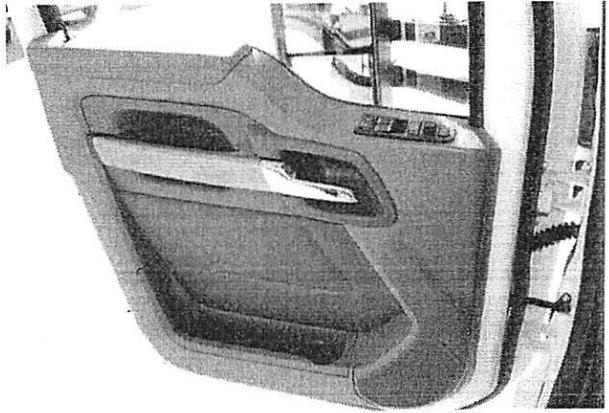
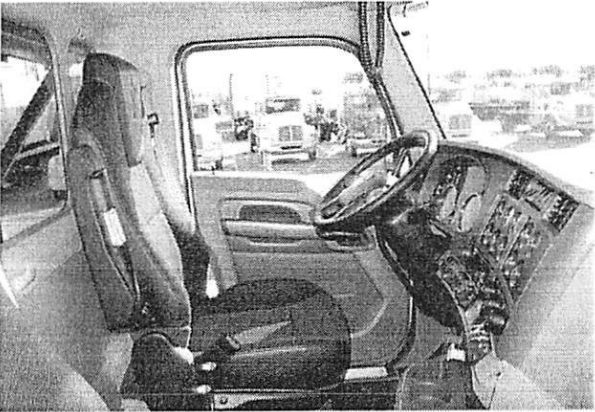
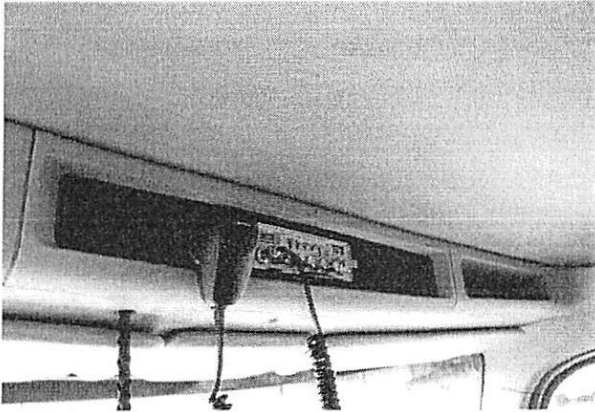


Inland Kenworth Phoenix
8314 W Roosevelt St, Tolleson, Arizona 85353

The White Mountain Apache Tribe, here's your
T880 Quote

Stock # **KJ377302**

Quoted on 7/11/2019





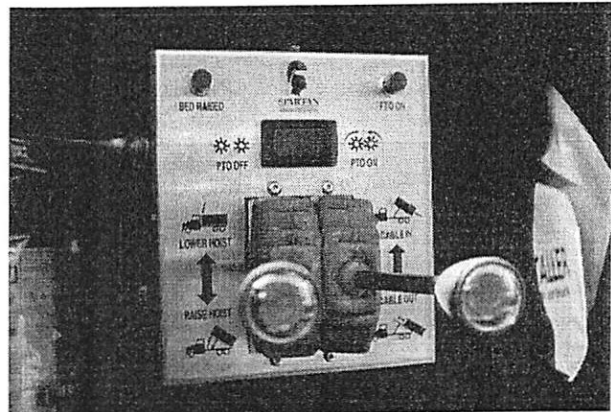
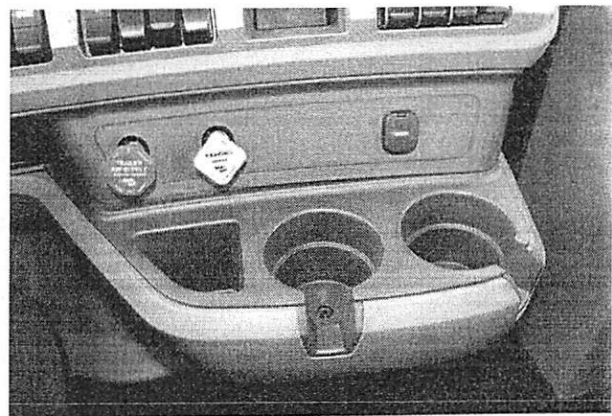
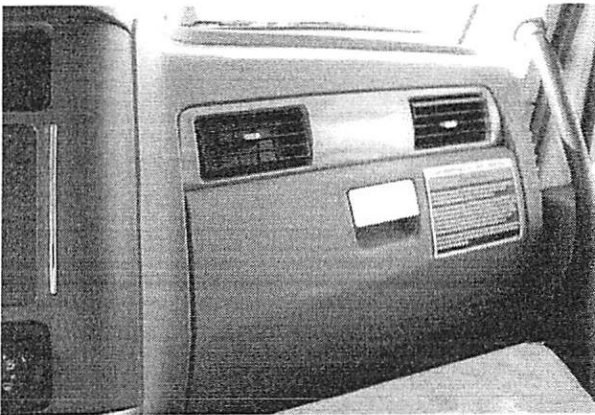
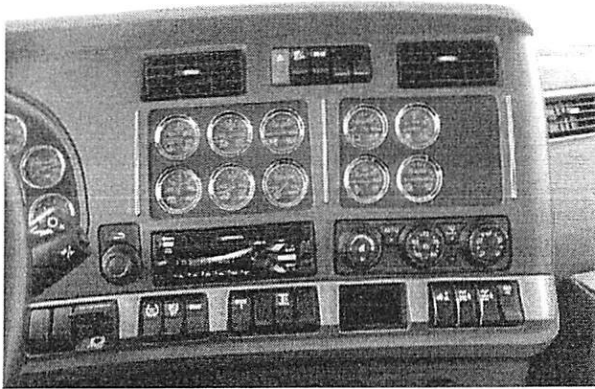
Inland Kenworth Phoenix
8314 W Roosevelt St, Tolleson, Arizona 85353

The White Mountain Apache Tribe, here's your

T880 Quote

Stock # KJ377302

Quoted on 7/11/2019



Prepared For:
RWC Group
Tom Hartman
600 N 75th Ave.
Phoenix, AZ 85043-2112
(602)307 - 1050
Reference ID: N/A

Presented By:
RWC Group
Vanessa Martinez
600 North 75th Avenue
PHOENIX AZ 85043 -
(602)307-1050

Model Profile
2020 INTEGRATED CE S BUS (PB105)

APPLICATION:	School Transportation
MISSION:	Requested GVWR: 37000. Calc. GVWR: 31000 Calc. Start / Grade Ability: 17.74% / 1.75% @ 55 MPH Calc. Geared Speed: 86.7 MPH
DIMENSION:	Wheelbase: 276.00, CA: N/A, Axle to Frame: 166.00
ENGINE, DIESEL:	{Cummins B6.7 260} EPA 2017, 260HP @ 2400 RPM, 660 lb-ft Torque @ 1600 RPM, 2600 RPM Governed Speed, 260 Peak HP (Max), School Bus Only
TRANSMISSION, AUTOMATIC:	{Allison 2500 PTS} 5th Generation Controls, Wide Ratio, 5-Speed with Overdrive, Less PTO Provision, Less Retarder, with 33,000-lb GVW and GCW Max, School Bus Omit Item (Clutch & Control)
CLUTCH:	
AXLE, FRONT NON-DRIVING:	{Meritor MFS-10-122A} I-Beam Type, 10,000-lb Capacity
AXLE, REAR, SINGLE:	{Navistar Select} Single Reduction, 21,000-lb Capacity, 190 Wheel Ends Gear Ratio: 4.88
TIRE, FRONT:	(2) 11R22.5 Load Range H HSR2 (CONTINENTAL), 498 rev/mile, 75 MPH, All-Position
TIRE, REAR:	(4) 11R22.5 Load Range H HSR2 (CONTINENTAL), 498 rev/mile, 75 MPH, All-Position
SUSPENSION, REAR, AIR, SINGLE:	{International IROS} 21,000-lb Capacity, 9.25" Ride Height, with Shock Absorbers
PAINT:	Cab schematic 101NB Location 1: 4421, School Bus Yellow (Std) Location 2: 4422, School Bus Yellow Non Reflective (Nrf) Chassis schematic N/A

Vehicle Specifications
2020 INTEGRATED CE S BUS (PB105)

May 07, 2019

<u>Code</u>	<u>Description</u>
PB10500	Base Chassis, Model INTEGRATED CE S BUS with 276.00 Wheelbase, N/A CA, and 166.00 Axle to Frame.
1570	TOW HOOK, FRONT (2) Frame Mounted
1CAC	FRAME RAILS High Strength Low Alloy Steel (50,000 PSI Yield); 10.125" x 3.062" x 0.312" (257.2mm x 77.8mm x 8.0mm); 480.1" (12195mm) Maximum OAL <u>Includes</u> : CHASSIS PAINT Chassis Painted Prior to Body Mounting : FRAME RAILS All holes Laser Aligned and Machine Punched, Powder Coated Prior to Full Assembly, Assembled in Fixture using "Grade 8" Bolts : FRAME REINFORCEMENT, SPECIAL 3.30" x 1.80" x 0.312" x 31.50" Inverted "L" in Front Shock Absorber Mounting Area
1LLE	BUMPER, FRONT Contoured, Steel, Severe Duty <u>Includes</u> : BUMPER, FRONT THICKNESS 1/4 Inch
1LNT	CROSSING GATE, FRONT Omit Item <u>Includes</u> : CROSSING GATE, FRONT Matches Contour of Bumper
1SAM	CROSSMEMBER, REAR, AF (2)
1WJE	WHEELBASE RANGE 276" (700cm) Only
2ASH	AXLE, FRONT NON-DRIVING {Meritor MFS-10-122A} I-Beam Type, 10,000-lb Capacity <u>Includes</u> : AXLE, FRONT SQUARING to Plus or Minus .015 Inch, using a Special Fixture to Assure Parallelism of Springs <u>Notes</u> : The following features should be considered when calculating Front GAWR: Front Axles; Front Suspension; Brake System; Brakes, Front Air Cam; Wheels; Tires.
3ADB	SUSPENSION, FRONT, SPRING Parabolic Taper Leaf, Shackle Type, 10,000-lb Capacity, with Shock Absorbers <u>Includes</u> : SPRING PINS Bolt and Nut Type : SPRING PINS Rubber Bushings, Maintenance-Free <u>Notes</u> : The following features should be considered when calculating Front GAWR: Front Axles; Front Suspension; Brake System; Brakes, Front Air Cam; Wheels; Tires.
4002	BRAKE, PARKING Omit Item
4091	BRAKE SYSTEM, AIR Dual System for Straight Truck Applications <u>Includes</u> : BRAKE LINES Color and Size Coded Nylon : DRAIN VALVE Twist-Type : GAUGE, AIR PRESSURE (2) Air 1 and Air 2 Gauges; Located in Instrument Cluster : PARKING BRAKE CONTROL Yellow Knob, Located on Instrument Panel : PARKING BRAKE VALVE For Truck : QUICK RELEASE VALVE On Rear Axle for Spring Brake Release: 1 for 4x2, 2 for 6x4 : SLACK ADJUSTERS, FRONT Automatic (with Air Cam Brakes) : SLACK ADJUSTERS, REAR Automatic (with Air Cam Brakes) : SPRING BRAKE MODULATOR VALVE R-7 for 4x2, SR-7 with relay valve for 6x4/8x6 <u>Notes</u>

Vehicle Specifications
2020 INTEGRATED CE S BUS (PB105)

May 07, 2019

<u>Code</u>	<u>Description</u>
	: Rear Axle is Limited to 19,000-LB GAWR with Code 04091 BRAKE SYSTEM, AIR and Code 04NDC BRAKES, REAR, AIR CAM Regardless of Axle/Suspension Ordered
	: Rear Axle is Limited to 20,000-LB GAWR with Code 04092 BRAKE SYSTEM, AIR and Code 04NCW BRAKES, REAR, AIR CAM Regardless of Axle/Suspension Ordered
4AZS	AIR BRAKE ABS {Bendix AntiLock Brake System} with Electronic Stability Program (4-Channel; 4 Sensor/4 Modulator) with Automatic Traction Control
4EBS	AIR DRYER {Bendix AD-9} with Heater
4EUB	BRAKE LININGS, FRONT {Meritor R301} Non-Asbestos for S-Cam Brake
4EXP	BRAKE CHAMBERS, FRONT AXLE {Bendix} 20 SqIn
4EXU	BRAKE CHAMBERS, REAR AXLE {Bendix EverSure} 30/30 Spring Brake
4JCJ	BRAKES, FRONT, AIR CAM S-Cam; 16.5" x 5.0"; Includes 20 Sq. In. Long Stroke Brake Chambers
	<u>Notes</u>
	: The following features should be considered when calculating Front GAWR: Front Axles; Front Suspension; Brake System; Brakes, Front Air Cam; Wheels; Tires.
4NDB	BRAKES, REAR, AIR CAM S-Cam; 16.5" x 7.0"; Includes 30/30 Sq.In. Long Stroke Brake Chamber and Spring Actuated Parking Brake
	<u>Notes</u>
	: The following features should be considered when calculating Front GAWR: Front Axles; Front Suspension; Brake System; Brakes, Front Air Cam; Wheels; Tires.
4SPA	AIR COMPRESSOR {Cummins} 18.7 CFM
4VCY	AIR TANK LOCATION (1) Mounted Left Side to Provide Clearance for Larger Body Builder Supplied Battery Box
4WWX	DRAIN VALVE {Humphrey} (3) Air Operated, with Controls in Drivers Compartment, for Air Tanks
4WZT	GVWR LIMITATION FOR BUS with Air Brakes, Limited to 33,000-lbs Maximum to meet FMVSS 121 Requirements, for Conventional Bus
5710	STEERING COLUMN Tilting and Telescoping
5CAL	STEERING WHEEL 2-Spoke, 18" Dia., Black
5PRR	STEERING GEAR {TRW (Ross) TAS66} Power
7BLA	EXHAUST SYSTEM Single, Horizontal Aftertreatment Device, Frame Mounted Under Right Rail, for Single Long Horizontal Tail Pipe
	<u>Includes</u>
	: NOTE: The Horizontal Tailpipe Includes a Temperature Control Device
7WBL	TAIL PIPE Long Horizontal, Exits Left Side Through Bumper
8000	ELECTRICAL SYSTEM 12-Volt, Standard Equipment
	<u>Includes</u>
	: FUSES, ELECTRICAL SAE Blade-Type
	: HAZARD SWITCH Push On/Push Off, Located on Top of Steering Column Cover
	: HEADLIGHT DIMMER SWITCH Integral with Turn Signal Lever
	: MISCELLANEOUS FEATURES Modular, Loom Protected, Grommets in all Applicable Body Openings, Assembled in Computer Assisted Fixture which Verifies Continuity and Correct Assembly Prior to Installation
	: PARKING LIGHT Integral with Front Turn Signal and Rear Tail Light
	: STARTER SWITCH Electric, Key Operated
	: TURN SIGNAL FLASHER
	: TURN SIGNAL SWITCH Self-Cancelling with Lane Change Feature

Vehicle Specifications
2020 INTEGRATED CE S BUS (PB105)

May 07, 2019

<u>Code</u>	<u>Description</u>
	: TURN SIGNALS, FRONT Includes Reflectors; Flush Mounted : WINDSHIELD WIPER SWITCH 2-Speed with Wash and Intermittent Feature (5 Pre-Set Delays), Integral with Turn Signal Lever : WIRING, CHASSIS Color Coded and Continuously Numbered
8GXK	ALTERNATOR {Leece-Neville BLP4006HN} Brushless, 12 Volt 325 Amp. Capacity, Pad Mount, with Remote Sense
8MSG	BATTERY SYSTEM {Fleetrite} Maintenance-Free, (3) 12-Volt 1980CCA Total, Top Threaded Stud
8TTK	BATTERY BOX Steel, with Sliding Tray, 25.25" Wide, for Standard Batteries, 1-3 Battery Capacity, Mounted Left Side Behind Front Axle Perpendicular to Frame Rail
8TUT	COLLISION MITIGATION SYSTEM Omit
8VAZ	HORN, ELECTRIC (2) Trumpet Style, Mounted on Top of Mega-Bracket
8WPB	HEADLIGHTS Halogen; Composite Aero Design for Two Light System; Includes Daytime Running Lights
8WPX	LIGHTS TURN ADDITIONAL Amber, Mounted at Rear of Front Fender
8WTK	STARTING MOTOR {Delco Remy 38MT Type 300} 12 Volt; less Thermal Over-Crank Protection
8WWJ	INDICATOR, LOW COOLANT LEVEL with Audible Alarm
8WXB	HEADLIGHT WARNING BUZZER Sounds When Head Light Switch is on and Ignition Switch is in "Off" Position
8XAH	CIRCUIT BREAKERS Manual-Reset (Main Panel) SAE Type III with Trip Indicators, Replaces All Fuses
9AAE	LOGOS EXTERIOR, ENGINE Badges
9WAB	HOOD TILT ASSIST {EASY TILT} Mechanical
9WAY	FRONT END Tilting, Fiberglass, with Three Piece Construction
	<u>Includes</u> : AIR INTAKE SYSTEM Integrated Pre-Cleaning System to Enhance Air Filter Life : GRILLE Removable; Fiberglass Painted Hood Color : SPLASH SHIELD Integral with Front End Assembly
10020	CHASSIS PAINT Full Chassis
10063	PAINT SCHEMATIC, PT-1 Two Tone, Design 101 for Non-Reflecting Schoolbus Hood
10661	PAINT, NON-REFLECTING Non-Reflecting Paint
10788	PAINT TYPE Urethane, One or Two Colors, Other than Imron or International.
10AAY	OVER THE AIR PROGRAMMING {Navistar} for Cummins Engines
10XAK	PROMOTIONAL PACKAGE 7 Year Unlimited Miles/km Warranty, Limited Time Program for Allison 2000 Series Transmission on School and Commercial Buses (Supplied directly through Allison)
11001	CLUTCH Omit Item (Clutch & Control)
12703	ANTI-FREEZE Red, Extended Life Coolant; To -40 Degrees F/ -40 Degrees C, Freeze Protection
12EJW	ENGINE, DIESEL {Cummins B6.7 260} EPA 2017, 260HP @ 2400 RPM, 660 lb-ft Torque @ 1600 RPM, 2600 RPM Governed Speed, 260 Peak HP (Max), School Bus Only
	<u>Includes</u> : FUEL FILTER Included with Cummins B6.7 Engines Engine Mounted : FUEL/WATER SEPARATOR Fuel/Water Separator; Heated; with Water-in-Fuel Sensor. Engine Mounted
12TSY	FAN DRIVE {Borg-Warner SA85} Viscous Type, Screw On
	<u>Includes</u>

Vehicle Specifications
2020 INTEGRATED CE S BUS (PB105)

May 07, 2019

<u>Code</u>	<u>Description</u>
12UGN	: FAN Nylon THROTTLE, HAND CONTROL Electronic <u>Notes</u> : Cruise Control Switches Mounted on Steering Wheel are Non-Illuminated.
12UYE	RADIATOR Aluminum; 2-Row, Cross Flow, Over Under System, 717 SqIn Louvered, with 313 SqIn Charge Air Cooler. with In-Tank Transmission Cooler <u>Includes</u> : DEAERATION SYSTEM with Surge Tank : HOSE CLAMPS, RADIATOR HOSES Gates Shrink Band Type; Thermoplastic Coolant Hose Clamps : RADIATOR HOSES Premium, Rubber
12VBR	AIR CLEANER with Service Protection Element <u>Includes</u> : GAUGE, AIR CLEANER RESTRICTION Air Cleaner Mounted
12VGY	FEDERAL EMISSIONS {Cummins B6.7} EPA, OBD and GHG Certified for Calendar Year 2019
12VVN	CRUISE CONTROL Electronic <u>Notes</u> : Cruise Control Switches Mounted on Steering Wheel are Non-Illuminated.
12VWH	GOVERNOR Electronic Road Speed Type; for Electronic Engines and Bus Models; with 55 MPH Default
12VYV	IDLE MANAGEMENT SYSTEM Ramp Engine Speed with Air Condition On, in Neutral and Parking Brake Set, Accommodation Package
12WAE	HOSE CLAMPS, RADIATOR HOSES Constant Torque, for Engine Hoses 1.0" I.D. and Over
12WSY	BLOCK HEATER, ENGINE {Phillips} 120 Volt/750 Watt, for Cummins ISB/B6.7 Engines
12WZE	EMISSION COMPLIANCE Federal, Does Not Comply with California Clean Air Idle Regulations
13ART	TRANSMISSION, AUTOMATIC {Allison 2500 PTS} 5th Generation Controls, Wide Ratio, 5-Speed with Overdrive, Less PTO Provision, Less Retarder, with 33,000-lb GVW and GCW Max, School Bus <u>Includes</u> : OIL FILTER, TRANSMISSION Mounted on Transmission : TRANSMISSION OIL PAN Magnet in Oil Pan
13WLN	TRANSMISSION OIL Synthetic; 20 thru 28 Pints
13WYY	SHIFT CONTROL PARAMETERS Allison 1000 or 2000 Series Transmissions, 5th Generation Controls, Performance Programming
14AJV	AXLE, REAR, SINGLE {Navistar Select} Single Reduction, 21,000-lb Capacity, 190 Wheel Ends . Gear Ratio: 4.88
14TBS	SUSPENSION, REAR, AIR, SINGLE {International IROS} 21,000-lb Capacity, 9.25" Ride Height, with Shock Absorbers <u>Notes</u> : The following features should be considered when calculating Rear GAWR: Rear Axles; Rear Suspension; Brake System; Brakes, Rear Air Cam; Brake Shoes, Rear; Special Rating, GAWR; Wheels; Tires.
15SHU	FUEL TANK Top Draw, Steel, Rectangular, 100 US Gal (379L), Includes Protective Cage, with Fuel Filler Assembly and Vent Hosing, Mounted Between Frame Rails and Behind Rear Axle <u>Notes</u> : Requires 254" WB Minimum

Vehicle Specifications
2020 INTEGRATED CE S BUS (PB105)

May 07, 2019

Code	Description
15WDT	DEF TANK 12 US Gal (45L) Capacity, Frame Mounted Outside Right Rail, Behind 0 Bow
16010	COWL Flat Back
16HBA	GAUGE CLUSTER English with English Electronic Speedometer <u>Includes</u> : GAUGE CLUSTER (5) Engine Oil Pressure (Electronic), Water Temperature (Electronic), Fuel (Electronic), Tachometer (Electronic), Voltmeter : ODOMETER DISPLAY, Miles, Trip Miles, Engine Hours, Trip Hours, Fault Code Readout : WARNING SYSTEM Low Fuel, Low Oil Pressure, High Engine Coolant Temp, and Low Battery Voltage (Visual and Audible)
16HGH	GAUGE, OIL TEMP, AUTO TRANS for Allison Transmission
16HHE	GAUGE, AIR CLEANER RESTRICTION {Filter-Minder} with Black Bezel, Mounted in Instrument Panel
16HKT	IP CLUSTER DISPLAY On Board Diagnostics Display of Fault Codes in Gauge Cluster
16HLH	ADJUSTABLE PEDALS Accelerator and Brake, Allows Pedals to Move Forward or Rearward to Accommodate Driver
16HLJ	GAUGE, DEF FLUID LEVEL
16VCD	DASH INSULATOR
27DUW	WHEELS, FRONT {Accuride 51408} DISC; 22.5x8.25 Rims, Powder Coat Steel, 2-Hand Hole, 10-Stud, 285.75mm BC, Hub-Piloted, Flanged Nut, with Steel Hubs
28DUW	WHEELS, REAR {Accuride 51408} DUAL DISC; 22.5x8.25 Rims, Powder Coat Steel, 2-Hand Hole, 10-Stud, 285.75mm BC, Hub-Piloted, Flanged Nut, with Steel Hubs
29580	WHEEL SEALS, FRONT {International} Oil-Lubricated Wheel Bearings
47AJB	BODY CERTIFICATION TAG Mylar Label
47AJC	BODY TAG, METAL Capacity to Include the Total Number of Passengers
47AJW	STEP, FRONT ENTRANCE DOOR 27 1/4" Depth; 14ga Steel <u>Includes</u> : STEP, FRONT ENTRANCE DOOR OPENING, 35 Inch Width; Continuous Bottom to Top
47AMG	BODY, BUS Conventional; 78" Headroom, 34'11" Body Length, +9 Section Rear, 78 Passenger, 276 WB <u>Includes</u> : NOTE: Body Mandates Overall Vehicle Length of Greater than 40 Feet
47APR	HEADLINER, BODY Conventional; 25'11"-34'11" Body Length, Perforated Full Length with Sound Insulation Full Length
47APW	FASTENERS, HEADLINER Rivets
47ARH	BOWS, ROOF 14 ga., One Piece Construction <u>Includes</u> : BOWS, ROOF Positioned Floor Line to Floor Line, Threaded Through Roof Strainers and Drip Rail
47ARP	LIGHT BARS Plastic
47ATB	SKIRT, BODY Conventional, 20", 16ga., 31'2", 31'11", 32'8", 33'5", 34'2", 34'11", Body Length <u>Includes</u> : SKIRT, BODY Extra Smooth Steel Supported by Floor Gussets
47AUR	TIE DOWNS, BODY Grade 8 Bolts, Every Body Section

Vehicle Specifications
2020 INTEGRATED CE S BUS (PB105)

May 07, 2019

<u>Code</u>	<u>Description</u>
	<u>Includes</u> : TIE DOWNS, BODY with Formed Tab that Fits into Floor Structure to Prevent Turning
47AXT	RUB RAILS, BODY (4) Conventional; Steel, 31'2", 31'11", 32'8", 33'5", 34'2", 34'11", Body Length, Includes Snow Rail
	<u>Includes</u> : RUB RAILS Full Length, Primer Coated (Both Sides), Attached to Body without Cuts or Splices
47AYB	BODY, REAR Includes Emergency Door
	<u>Includes</u> : DOOR, REAR EMERGENCY with Concealed Hinges : HEADER BUMPER Padded, Mounted Over Rear Door; Upholstered to Match Passenger Seat Color
47AZE	SIDE SHEET, BODY, EXTERIOR Conventional, 16ga., Smooth, 31'2", 31'11", 32'8", 33'5", 34'2", 34'11", Body Length
47AZL	FLOOR, BODY with Wheel Wells
47AZX	RAILS, WRAP-AROUND, FLOOR At Floor Level To Rear Door Post
47AZZ	RAILS, WRAP-AROUND Just Below Window Line
47BAR	SUPPORTS, REAR BUMPER Bolted to Frame
47BAU	BUMPER, REAR Painted; 12" High, 3/16" Thick, with 7" Hole for Exhaust
47BAW	TOW HOOK, LEFT REAR (01)
47BAX	TOW HOOK, RIGHT REAR (01)
47BBH	LINING, SIDE INTERIOR, LOWER Embossed Steel, Clear Coated
47BEX	SEALER Water-proof Sealer on all Floor Covering Seams
47DAJ	COVER, REAR DOOR INSIDE HANDLE Partial Coverage
47DAK	FASTENERS, REAR DOOR Bolts and Nutserts, Rear Door To Body
47DDE	HANDLE, ASSIST, ENTRANCE DOOR Outside Entrance
47DDH	HOLD BACK, REAR DOOR Stationary, No Cables, with Plastic Cover
47DDU	LATCH, REAR DOOR One Point Slide Bar, Cam Operated, with One Inch Stroke
47DEK	LOCK, VANDAL, REAR DOOR with Ignition Starter Interlock
47DEY	HANDLE, EXTERIOR, REAR Emergency Door; Yellow
47DNB	DOOR, ENTRANCE, FRONT Electric, Outward Opening, with Split Pane Glass
	<u>Includes</u> : DOOR, ENTRANCE, FRONT Aluminum Frame with Pin Style Hinges, Ball Bearing Assisted, Interchangeable Top and Bottom Glass Vandal Lock : LOCK, VANDAL, ENTRANCE DOOR With Key Switch
47DNK	SWITCH, LOCATION Steering Wheel; Includes Master Flasher, Flasher On/Off, Red Override, and Door Control
	<u>Includes</u> : SWITCH, STEERING WHEEL, LIGHT Includes Illuminated Switches
47DWV	KEYS ALIKE, VANDAL LOCKS Entrance Door , 545 Keys
47EBM	HOLD DOWN, BATTERY For (2) Standard Size Batteries
47ETE	COMPARTMENT, LUGGAGE, RT FWD 66"x 24" x 22"

**Vehicle Specifications
2020 INTEGRATED CE S BUS (PB105)**

May 07, 2019

<u>Code</u>	<u>Description</u>
	<u>Includes</u> : HINGES Rubber : LATCH, T-HANDLE, LOCKING Stainless Steel
47KDC	MONITOR, POST TRIP INSPECTION {Leave No Student Behind} Accessory Controlled, with Push Button Alarm Disable at Rear of Bus Prompts Driver to Walk to Back of Bus and Push Button in Light Bar to Deactivate System
47LAB	NOISE REDUCTION, DRIVER FLOOR Insulation Covering Complete Driver Floor Area
47LAT	NOISE REDUCTION, ROOF BOW Conventional; Insulation, 31'2", 31'11", 32'8", 33'5", 34'2", 34'11", Body Lengths
47LAU	INSULATION, ROOF AND SIDES 1.50", All Models
47MBA	UNDERCOAT, BODY Fire Resistant, Water Based, TT-C-730 Spec <u>Includes</u> : UNDERCOATING Performed Before and After Mounting on Chassis
47MBC	INSULATION, STEPWELL
47MJR	LETTERS, DOOR, REAR Decals; "EMERGENCY DOOR", 2" Black Letters Inside and Outside
47MNM	LETTERS, BATTERY COMPARTMENT (01) Decal; "Battery"; 2" Black Letters, Centered on Standard Battery Box
47MNV	ARROW, RR DOOR, OUTSIDE Decal; Black .75" Stroke, Indicating Handle Direction
47MPD	LETTERS, SCHOOL BUS FRONT/REAR Decal; "SCHOOL BUS"; with 8" Black Reflective Letters, Reflexite V82, On Front and Rear Cap
47MRN	STRIPING, E/E WINDOW, LEFT (02) Perimeter, Reflexite V82, 1" Yellow
47MRU	LETTERS, E/E WINDOW, LEFT (2) Decal Sets, "EMERGENCY EXIT", Black Inside and Outside
47MSA	STRIPING, PERIMETER, REAR Emergency Door, Reflexite 1" Yellow Reflective
47MSE	STRIPING, REAR END Reflexite 2" Yellow
47MSJ	STRIPING, ROOF HATCH, FRONT Reflexite Decal, Perimeter, 1" Yellow
47MSK	STRIPING, ROOF HATCH, REAR Reflexite Decal, Perimeter, 1" Yellow
47MSS	STRIPING, SEATLINE Reflexite V82, 2" Yellow
47MTY	WIRING DIAGRAM Schematic, Electrical <u>Includes</u> : ACCESS PANEL for Wiring Diagram Schematic Located on Body Exterior; Below Driver Window
47MUP	STRIPING, E/E WINDOW, RIGHT (02) Perimeter, Reflexite V82, 1" Yellow
47MVA	LETTERS, HEADER Decal; "WATCH YOUR STEP", 1" Black, Above Windshield
47MVC	LETTERS, STEPWELL Decal, "WATCH YOUR STEP", 2.5" Black, Behind Door on Step Riser
47NAB	PAINT COLOR, RUB RAILS 0001 Canyon Black
47NGT	PAINT HOOD TOP 4422 Yellow, Non-Reflecting
47NGW	SEAL, RUB RAILS Top Edge, All Rails
47NHL	LETTERS, E/E WINDOW, RIGHT (2) Decal Sets, "EMERGENCY EXIT", Black, Inside and Outside
47NJA	PAINT COLOR, BODY EXTERIOR 4421 School Bus Yellow
47NJM	PAINT FLASHER BACKGRD 0001 Canyon Black

**Vehicle Specifications
2020 INTEGRATED CE S BUS (PB105)**

May 07, 2019

Code	Description
47NJS	PAINT COLOR, BUMPER Rear, 0001 Canyon Black
47NKD	PAINT COLOR, ROOF 9219 Winter White, Beginning 5" Above Drip
47NKL	PAINT, RUB RAIL Flange to Flange
47NKM	PAINT COLOR, BODY INTERIOR 9384 Spring White
47NKZ	LETTERS, FUEL I.D. Decal; "DIESEL FUEL", 2" Black, Adjacent to Fuel Filler Door
47NMG	OPERATING INSTR, REAR Decal, Inside Rear Emergency Door
47NTE	LOGO, ROOF LINE Decal; Wing and Shield, First Body Section, Above Driver Window and Entrance Door Over Driver Window and Entrance Door
47PCG	HANDLE, ASSIST Windshield Side Mounted, Left and Right, Body Color, with Certain Mirrors Only
47PLX	LETTERS, DEF, I.D. Decal; "DEF ONLY", 1" Black, on DEF Filler Door
47SBS	SUB FLOOR, PLYWOOD Conventional; B-C Exterior Grade, Less Sealed Edges, 5/8", 5 Ply, for 31'2",31'11", 32'8",33'5", 34'2", 34'11", Body Length
48ACN	SEAT BELT, DRIVER, COLOR with Blaze Orange Seat Belt Webbing
48ANT	WINDOW, DRIVER Laminated, Clear
48APL	WINDOW, STOPS 12" Opening, Only with 78" Headroom
48ARU	WINDOW, SASH (20) 27" Sections, 9"x 23" Opening
48ASP	WINDOW, SASH +9 SECTIONS (2) 9" x 32 1/4" Opening
48BAH	WINDOW, E/E, LEFT (2) Vertical Hinge
48BJA	COLOR, WINDOW FRAME, PASS Passenger Window, Natural Aluminum Finish
48BKP	WINDOW, E/E, RIGHT (2) Vertical Hinge
48BUB	WINDOW, PASSENGER, TINT Conventional; 28% Light, Tempered Glass, 78" Headroom, with 34'11", 31'2", 31'11", 32'8", 33'5", 34'2" Body Lengths
48CMY	UPHOLSTERY, DRIVER SEAT, COLOR 2-Tone Gray
48GHC	HEATER, DRIVER 90,000 BTU, with Defroster and without Rear Heat Duct
	<u>Includes</u>
	: AIR FILTER
	: HEATER HOSES Premium
	: HOSE CLAMPS, HEATER HOSE Mubea Constant Tension Clamps
48NAT	FITTINGS, AIR SEAT for Driver Seat
48PAM	WINDSHIELD 3 Flat Pieces, 73% Light, with Band
48PAV	WHEEL POCKET COVER Plastic, ABS
48PAY	AISLE POSITION Center, for balanced seating
48PEW	FLOOR COVERING, COLOR Gray #766
48PJZ	FLOOR COVERING, TYPE {Koroseal} All Body Lengths
48PKC	HOSE CLAMPS, HEATER HOSE Constant Torque for Heater System
48PKM	FLOOR COVERING, TRIM {Koroseal} Plastic Base with PVC Cap
48PKR	FAN, DEFOG LEFT CENTER 6.50" Diameter, Black, Mounted Left of Center Post, 2-Speed Switch in Panel
48PMJ	HEATER, PASS, LT REAR 84,500 BTU

Vehicle Specifications
2020 INTEGRATED CE S BUS (PB105)

May 07, 2019

<u>Code</u>	<u>Description</u>
	<u>Includes</u> : AIR FILTER
48PMN	HEATER, PASS, RT MIDSHIP 1ST 84,500 BTU
	<u>Includes</u> : AIR FILTER
48PNZ	HEATER, WATER PUMP {2 MPU 12} Self Priming, Metal Housing
48PPM	HEATER CUT OFF, VALVE Ball, with Butterfly Handle
48PPS	ROOF VENT, FRONT Static
48PTT	ARM REST, DRIVER, RIGHT {National}
48PUT	NUTS, BELT MOUNTING Standard Nuts For Seat Belt Mounting
48PVB	UPHOLSTERY, DRIVER SEAT, STYLE Plain
48PWD	UPHOLSTERY, PASS SEATS, COLOR Gray, for Seats, Barriers and Head Bumpers
48PWZ	UPHOLSTERY, DRIVER SEAT, TYPE Fabric
48PXA	UPHOLSTERY, BARRIER, TYPE (1-2) Vinyl, 42 oz.
48RAE	BARRIER, CRASH, AFT ENTRY DOOR 39", 1 Leg
48RAL	BARRIER, CRASH, AFT DRIVER 39", 1 Leg
48REP	PANEL, MODESTY, AFT OF DRIVER Mounted Under Barrier
48RET	PANEL, MODESTY, AFT ENTR DOOR Mounted Under Barrier
48RGE	HAND RAIL, ENTRANCE DOOR, FWD Stainless Steel; Curved
48RGR	HAND RAIL, ENTRANCE DOOR, AFT Stainless Steel, 4", Above Step
48RLX	CUSHION, SEAT 15" Depth
	<u>Includes</u> : WARRANTY Four Years
48RRA	UPHOLSTERY, SEAT, STITCHING Single
	<u>Includes</u> : WARRANTY Two Years
48RZJ	STEP TREADS {Koroseal} Pebble Top with White Nosing, with Non-Metal Backing
48SAD	SEAT,PASS,LT,26",2 LEG (01)
48SBG	UPHOLSTERY, PASS SEATS, TYPE Vinyl, 42 Ounce
48SDV	SEAT,PASS,LT,39",2 LEG (12)
	<u>Notes</u> : BTI Seating System Base Seat. Retrofittable, Contact IC Bus Application Engineering for more information.
48SKP	SEAT,PASS,RT,39",2 LEG (13)
	<u>Notes</u> : BTI Seating System Base Seat. Retrofittable, Contact IC Bus Application Engineering for more information.
48TZK	SEAT, DRIVER {National Premium} Air Suspension with Suspension Skirt, Triple Chamber Adjustable Air Lumbar, Adjustable Cushion and Back Bolsters, 6 Position Front Cushion Adjuster, 3 Position Rear Cushion Adjuster, 6 to 23 Degree Back Recline

Vehicle Specifications
2020 INTEGRATED CE S BUS (PB105)

May 07, 2019

<u>Code</u>	<u>Description</u>
	<u>Includes</u> : SEAT BELT, DRIVER Adjustable D-Loop Seat Belt, Single Locking Retractor
48UCP	ROOF HATCH, FRONT {Transpec 1975-028-121-03} with Outside Release, with English Decals
48UCR	ROOF HATCH, REAR {Transpec 1975-028-121-03} with Outside Release, with English Decals
48USV	SEAT BACK, PASSENGER High Back
49028	BODY PLAN, APPROVED VARIATION Number 028
49AHV	LIGHT, STROBE, STOP SIGN, FRT In Lieu Of Flashing Lights Furnished with Stop Sign, Speciality
49AMD	SWITCH, DRIVER PANEL, TYPE Rocker
49AMJ	ALARM, BACKING {Ecco #575} 107 db
49AMT	CIRCUIT, PROTECTION Breakers, Manual Reset in Lieu of Fuses
	<u>Includes</u> : ACCESS PANEL for Body and Chassis Fuses/Circuit Breakers Located on Body Exterior; Below Driver Window
49AMY	SWITCH, REAR DOOR BUZZER for Emergency Door
49ANH	SWITCH, MAGNETIC, DISCONNECT Master, Ignition Operated, All Body Circuits
49ANU	SOURCE, POWER 12 VDC, Mounted In Dash
49APA	LIGHT, DRIVER, CEILING Deluxe, with Separate Switch, Mounted in Light Bar
49APB	LIGHTS, DOME Rectangular Recessed Type, Stagger Mounted in Light Bars
	<u>Includes</u> : WIRING HARNESS Main Body Wiring Harness Accessed by Removing Dome Light
49AUM	SWITCH, MASTER FLASHER Omit Master Flasher Switch, 8-Lamp System
49AWT	SPEAKERS AND WIRING (4) Flush Mounted in Light Bar
49BCL	FLASHER SYSTEM (8) Warning Lights, 8-Lamp System, Electronic Relay Flasher, Sequential Operation, Red Lights Activate after Amber Lights, with Road Speed Parameters
49BCR	LIGHT, EXTERIOR, CHECK Automatically Activates Lights for Pre Trip Inspection
49BEW	MIRROR, REAR VIEW, EXTERIOR Mirrorlite, Black, Super Nickel; Heated, Motorized
49BMA	STOP ARM, FRONT {Specialty 2980} Air, 18" Octagon, Double Sided, 1/2" White Border, Hi Intensity Grade, Strobing LED Lights
49BUT	VISOR, INTERIOR, LEFT FRONT 6" x 30", Transparent, For Left Windshield, with Finger Hold Adjustment Knob
49BVE	MIRROR, CROSS VIEW, EXTERIOR {Mirror Lite High Definition Busboy} for Left & Right Side; Black
49BYT	LIGHTS, STOP (2) {Sound Off} and Tail; 7" Round LED, Red
49BYZ	LIGHTS, DIRECTIONAL, REAR (2) {Sound Off} LED, 7" Round Amber LED
49BZG	LIGHTS, BACK UP (2) {Sound Off} LED, 7" Round Clear
49BZU	RADIO, ENTERTAINMENT {Custom Radio} AM/FM Stereo/USB Input, Includes Antenna and Cable, with Public Address System
49DAG	LIGHT, INDIC, WARNING LIGHTS LED Type; Red and Amber
49DBR	HOOD, WARNING LAMP (4) Black, 8-Lamp System, One Hood Above Two Lights

Vehicle Specifications
2020 INTEGRATED CE S BUS (PB105)

May 07, 2019

Code	Description
49DDC	LIGHTS, CLUSTER {Truck Lite 07045A & 07045R} LED; Amber Front and Red Rear
49EAX	LIGHTS, DIRECTIONAL, SIDE (4) {Sound Off} Rectangular LED Armored, 2 Each Side First Section Aft Entrance Door & Forward Rear Wheel Pocket
49EGB	MIRROR, INSIDE 10" x 30", Clear
49ENR	VISOR, INTERIOR, DRIVER LEFT 10" X 30" for Driver's Window
49EUB	KIT, FIRST AID Metal; 24 Unit, Spec State
49EVL	SWITCH, NOISE SUPPRESSION Actuator Legend States, "NOISE SUPP ", for Separate Solenoid, with Red Switch in Panel
49GBG	KIT, BODY FLUID Arizona, Mounted on the Bulkhead
49GBV	WINDSHIELD WIPERS (2) Cowl Mounted <u>Includes</u> : WINDSHIELD WIPERS CONTROL Single Motor, Overlapping Wipe Pattern
49GDG	PADDING COMPART ABOVE DRIVER Window; Safety Equipment, Vandal Equip Compartment with Cutout for dome light
49GDS	COMPARTMENT ABOVE DRIVER Left of the Driver <u>Includes</u> : COMPARTMENT ABOVE DRIVER Compartment Size: 39" x 10" x 10" : HINGES Piano Type
49GGE	FIRE EXTINGUISHER, DRIVER AREA 5 lb 2A-40BC Minimum with Flexible Hose and Metal Nozzle
49GHN	REFLECTORS, REAR (2) 3", Red, Adhesive Back
49GHR	REFLECTORS, SIDE, REAR (2) 3", Red, Adhesive Back
49GHV	REFLECTORS, SIDE, FRONT (2) 3", Amber; Adhesive Back, 1 Aft Drivers Window Left, 1 Aft Entrance Door Right
49GHX	REFLECTORS, SIDE, INTERMEDIATE (2) 3" Amber, 1 Each Side, Below The Third Rub Rail From the Top, Adhesive Back
49GJT	KICK-PAD Aluminum; All Steps
49GKL	SAFETY TRIANGLES 1 Kit; Warning Reflectors, Mounted on Floor Between Driver Seat and Drivers Crash Barrier/Stanchion
49GKZ	FUEL FILLER DOOR with Non-Locking Latch
49GUK	FENDERS, RUBBER, REAR (2)
49GUM	INSPECTION PLATE Fuel Sending Unit 8" x 8" Steel
49GUX	MUD FLAPS, FRONT WHEELS (2) Rubber
49GVH	MUD FLAPS, REAR WHEELS (2) Brackets Only
49GWW	WINDSHIELD WASHER Kit; 6 Quart Capacity, Bottle <u>Includes</u> : WINDSHIELD WASHER ELECTRICAL CONNECTIONS Sealed and Locking Type
49GZT	FUEL FILLER PIPE Neck Cap and Vent Hosing for Use with Right Side Fill 100 Gal. Between the Rails Fuel Tanks
49JAD	DEF FILLER DOOR with Locking Latch

Vehicle Specifications
2020 INTEGRATED CE S BUS (PB105)

May 07, 2019

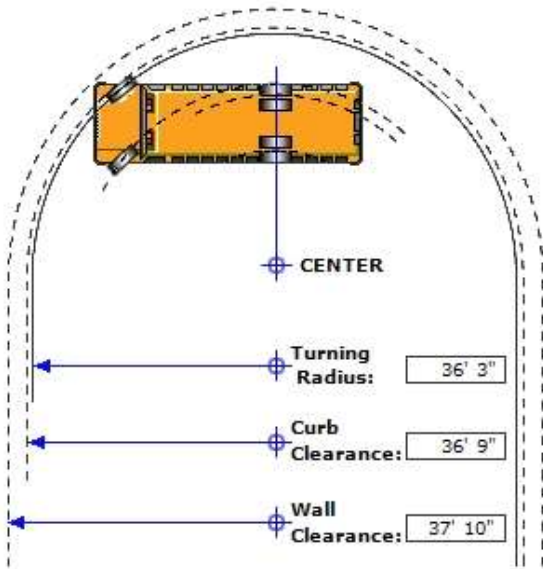
Code	Description
49JBU	LIGHT, ENTRY DOOR {Sound Off} LED; 4" Oval; Light Mounted in Skirt Behind Entrance Door, Wired To Step Light
49JBX	LIGHT, STEP {Sound Off} 4" Round LED, White, Wired to Ignition, Operated by Entrance Door
49JBY	LIGHTS, MARKER, FRONT, REAR {Sound Off} (4) Total, Slim-Line Armored LED, (2) Amber Front and (2) Red Rear
49MZV	LATCH, COMPARTMENT Locking, for Overhead Storage Compartment
49NGB	LIGHT, COMPARTMENT, ENGINE {Sound Off} LED 4" Oval; Activated with Parking Lights, with On/Off Switch, Includes Limit Switch that Allows Light to come on When Hood is Opened
49NGG	LIGHTS, TAIL, LICENSE PLATE (2) {Sound Off} 4" Round LED, Red, Includes Stop & Light Window, Includes Mounting Gasket
49NGJ	LIGHTS, WARNING (8) {Sound Off} (4) 7" Round Red Strobing LED and (4) 7" Round Amber Strobing LED, 2 Front, 2 Rear Each Color
49UAC	STATE OF OPERATION Arizona
49ZNE	LIGHTS, MARKER, SIDE {Sound Off} Slim-Line Armored, LED, Intermediate, Centered; Required for Units 30 Foot or Longer
50ACW	BODY PLAN, NON-SPECIAL NEEDS Conventional; 34' 11" Body Length, +9 Section Rear, 77 Passenger, 276" WB, DX3071A000
7382135415	(2) TIRE, FRONT 11R22.5 Load Range H HSR2 (CONTINENTAL), 498 rev/mile, 75 MPH, All-Position
7382135415	(4) TIRE, REAR 11R22.5 Load Range H HSR2 (CONTINENTAL), 498 rev/mile, 75 MPH, All-Position
OBD001	ENGINE, GASOLINE CUMMINS DIESEL ENG 260HP

Services Section:

40126	WARRANTY Standard for CE, RE, BE School Bus Models, Effective with Vehicles Built March 1, 2017 or Later, CTS-3304H
40KMD	SERVICES, TOWING {Navistar} Service Call to 60-Month/Unlimited Mileage to the Nearest Navistar Dealer for Navistar Warrantable Failure as Contract Defined; Includes Engine Failure if Supplier Declines Tow Coverage & ESC Supplied thru Navistar; \$550 (USA) Maximum Benefit per Incident
40PLB	SRV CONTRACT, EXT VEH COVERAGE {Navistar} To 36-Month/50,000 Miles (80,000 km), Covers 100% Parts and Labor; Includes Body; Excludes Extending Warranty for Engine, Transmission, Perforation or Corrosion of Cab/Cowl Structure and Paint
49GVN	WARRANTY 5-Year, Limited

Turning Radius Summary
2020 INTEGRATED CE S BUS (PB105)

May 07, 2019



Series: INGB
 Model: PB105
 Description: INTEGRATED CE S BUS
 Model Year: 2020

Calculation Factors

Wheelbase: 276
 Front Axle: 0002ASH
 Description: AXLE, FRONT NON-DRIVING, {Meritor MFS-10-122A} I-Beam Type, 10,000-lb Capacity
 Front Wheel: 0027DUW
 Description: WHEELS, FRONT, {Accuride 51408} DISC; 22.5x8.25 Rims, Powder Coat Steel, 2-Hand Hole, 10-Stud, 285.75mm BC, Hub-Piloted, Flanged Nut, with Steel Hubs
 Front Tire: 07382135415
 Description: TIRES, 11R22.5 Load Range H HSR2 (CONTINENTAL), 498 rev/mile, 75 MPH, All-Position
 Steering Gear: 0005PRR
 Description: STEERING GEAR, {TRW (Ross) TAS66} Power

Turning Radius Statistics

General Information

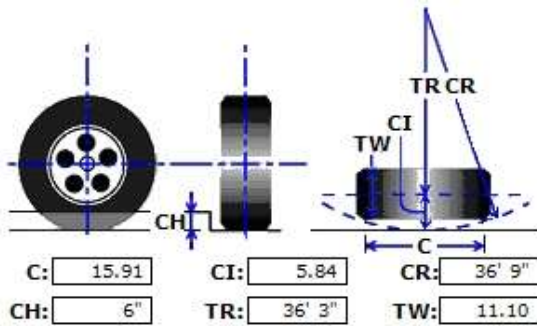
Inside Turn Angle: 50 Degrees
 Radial Overhang: 19

Axle Information

KingPin Inclination: 6.25 Degrees
 KingPin Center: 69

Turning Radius - Curb View

C - Curb Contact Length: 15.91
 CI - Curb Clearance Increment: 5.84
 CR - Curb Clearance Radius: 36'9"
 CH - Curb Height: 6"
 TR - Turning Radius: 36'3"
 TW - Tire Width: 11.10



* All Measurements are in inches, unless otherwise specified.

This information is based on engineering information available at this time. Actual figures may vary. Navistar, Inc. cannot accept liability for consequences due to this variance.

Date: 10/9/2019
 Mohave Quotation #: CE 872519-1
 Contract #: 18F-RWC-0904

Quote Valid Until: Until Sold
 Prepared By: Chad



Name: Marla Wilkerson
 Organization: Theodore Roosevelt
 Address:
 City, State ZIP: Fort Apache, AZ
 Phone:

Year: 2020
 Model / Body Size: CE 77 PASSENGER BODY
 Stock / Factory Order: Stock
 Capacity / Wheelbase: 77 / 276
 Price Pages:

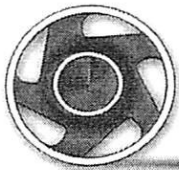
BUS PRICING INCLUDING DISCOUNTS		AMOUNT
Base Price Includes TA55552smc3TM43		\$ 109,000.00
Mohave Factory Standard Bus Discount:		\$ -
Options Pricing:		\$ -
Mohave Options Discount:		\$ -
AFTERMARKET OPTIONS- BUS PREP PRICING / INCLUDING DISCOUNTS		
VOLUME DISCOUNT / *SPECIAL PRICING DISCOUNT*		
RWC GROUP		\$ -
RWC GROUP		\$ -
BUS PREPARATION		
Pre Delivery Inspection Conventional School/MFSAB Bus		\$ 900.00
RWC GROUP		\$ -
AFTERMARKET OPTIONS		
RWC GROUP		\$ -
RWC GROUP		\$ -
RWC GROUP		\$ -
RWC GROUP		\$ -
RWC GROUP		\$ -
RWC GROUP		\$ -
RWC GROUP		\$ -
RWC GROUP		\$ -
RWC GROUP		\$ -
AIR CONDITIONING SYSTEM		
RWC GROUP		\$ -
RWC GROUP		\$ -
RWC GROUP		\$ -
CAMERA SYSTEM		
RWC GROUP		\$ -
RWC GROUP		\$ -
RWC GROUP		\$ -
RWC GROUP		\$ -
RWC GROUP		\$ -
RWC GROUP		\$ -
EXTENDED COVERAGE / WARRANTY		
TOWING - 60 / UNLIMITED MILES (\$550 PER) 40KMD		\$ 888.89
RWC GROUP		\$ -
RWC GROUP		\$ -
RWC GROUP		\$ -
RWC GROUP		\$ -
Sub Total:		\$ 110,788.89
Freight:		\$ 1,737.12
Trade Value:		\$ -
Raw Material/Emissions Surcharge/OBD Surcharge:		Included
Sub Total:		\$ 112,526.01
Sales Tax:		\$ -
Local Delivery Charge: 0-75 MILES		\$ 64.00
Tire Fee:		\$ 12.00
TOTAL (Includes Tax & Mohave 1%Fee):		\$ 112,602.01
PAYMENT TERMS:		*NET 30 DAYS*

Trades Included in This Quote:



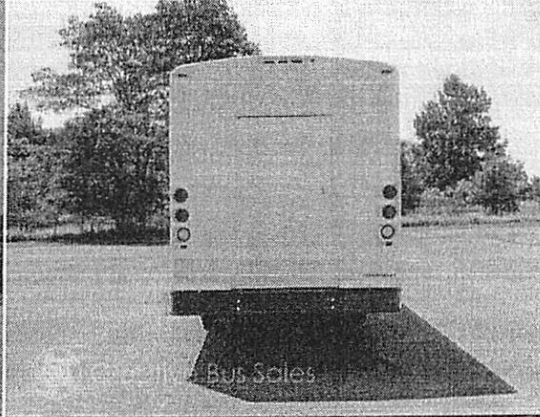
EARLY PAY DISCOUNT
 \$300 Per Bus If Payment Made Upon Delivery
 \$150 Per Bus If Payment is Received Within 15 Days of Delivery

Sales Tax: \$ -
 Local Delivery Charge: 0-75 MILES \$ 64.00
 Tire Fee: \$ 12.00

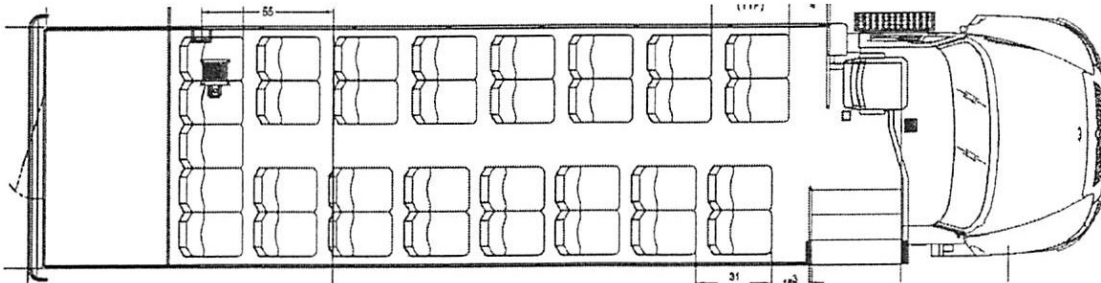


Creative Bus Sales

8/27/2019



* Photos of similar model. Only equipment listed is included.



NEW 2019 ALLSTAR XL IC TC 36' ADA SHUTTLE BUS
- 36 SEATED PASSENGERS AND 2 WHEELCHAIRS
NEW 2019 INTERNATIONAL TC CHASSIS WITH 291" WB
CUMMINS 6.7L DIESEL ENGINE 240HP 560LB-FT TORQUE
ALLISON 2550 5 SPEED AUTOMATIC TRANSMISSION
REAR AIR SUSPENSION WITH DASH MOUNTED DUMP SWITCH
GERFLOR SERIUS FLOORING - #6727 ANTHRACITE GREY
TA7733 SUPER DUAL 13 135K BTU DUAL AC
HOT WATER HEATER, 65K BTU (2) W/ BOOSTER PUMP
FRONT PASSENGER ENTRANCE DOOR 36' WITH ELECTRIC OPERATOR
EXTERIOR PASSENGER ENTRANCE DOOR KEY - FRONT

FRONT & SIDE DESTINATION SIGN PREP PACKAGE
JENSEN STERIO SYSTEM BLUETOOTH/AM/FM/CD/USB W/ 4 SPEAKERS
ADDITIONAL SPEAKERS (6)
OVERHEAD LUGGAGE RACK – BOTH SIDES
STARCRAFT CIRCUIT BOARD LIFT INTERLOCK
BACK-UP ALARM SAE TYPE C 97 DBA
SAFETY KIT – FIRE EXT, FIRST AID KIT, EMERGENCY TRIANGLES
ROSCO BACKUP CAMERA 4.3" DISPLAY IN DRIVER MIRROR
INTERIOR CONVEX MIRROR
1 1/4" GRAB RAIL PARALLEL TO ENTRANCE STEPS (BOTH SIDES)
STANCHION AND MODESTY PANEL BEHIND DRIVER
PADDED VINYL INTERIOR (WALLS AND CEILING)
REAR LUGGAGE AREA W/ REAR DOOR
FREEDMAN 3 POINT DOUBLE SEATS (18)
-NOW REQUIRED DUE TO GWW
SEAT COVER LEVEL 4 (36)
STARCRAFT WARRANTY - 5 YEAR 100,000 MILES

PRICING

Unit Price Delivered Pinetop, AZ* \$130,831*

*Prices do not include tax, license, or DMV fees.

*Price good for 90 days.

OPTIONS

Upgrade Chassis to 300hp engine and Allison 3000 transmission \$8,330*



Creative Bus Sales

8/27/2019



*Photos of similar model. Only equipment listed is included.

NEW 2019 ALLSTAR XL IC TC 40' ADA SHUTTLE BUS
- 36 SEATED PASSENGERS AND 2 WHEELCHAIRS
NEW 2019 INTERNATIONAL TC CHASSIS WITH 291" WB
CUMMINS 6.7L DIESEL ENGINE 240HP 560LB-FT TORQUE
ALLISON 2550 5 SPEED AUTOMATIC TRANSMISSION
REAR AIR SUSPENSION WITH DASH MOUNTED DUMP SWITCH
GERFLOR SERIUS FLOORING - #6727 ANTHRACITE GREY
TA7733 SUPER DUAL 13 135K BTU DUAL AC
HOT WATER HEATER, 65K BTU (2) W/ BOOSTER PUMP
FRONT PASSENGER ENTRANCE DOOR 36" WITH ELECTRIC OPERATOR
REAR PASSENGER EXIT DOOR 36" WITH ELECTRIC OPERATOR
EXTERIOR PASSENGER ENTRANCE DOOR KEY - FRONT
FRONT & SIDE DESTINATION SIGN PREP PACKAGE
JENSEN STERIO SYSTEM BLUETOOTH/AM/FM/CD/USB W/ 4 SPEAKERS
ADDITIONAL SPEAKERS (6)
OVERHEAD LUGGAGE RACK - BOTH SIDES
STARCRAFT CIRCUIT BOARD LIFT INTERLOCK
BACK-UP ALARM SAE TYPE C 97 DBA
SAFETY KIT - FIRE EXT, FIRST AID KIT, EMERGENCY TRIANGLES
ROSCO BACKUP CAMERA 4.3" DISPLAY IN DRIVER MIRROR
INTERIOR CONVEX MIRROR

1 1/4" GRAB RAIL PARALLEL TO ENTRANCE STEPS (BOTH SIDES)
STANCHION AND MODESTY PANEL BEHIND DRIVER
PADDED VINYL INTERIOR (WALLS AND CEILING)
FREEDMAN 3 POINT DOUBLE SEATS (18)
-NOW REQUIRED DUE TO GVW
SEAT COVER LEVEL 4 (36)
BRAUN CENTURY NCL919-2 WHEELCHAIR LIFT (34"X51") LIMIT SWITCHES
Q-8301-L MAX RETRCTR TIE DOWN,Q8-6326-A1 COMB LAP/SHLDR,L TRK (2)
DOUBLE WHEELCHAIR DOORS W/ WINDOWS, INTERIOR LIGHT
PRIORITY SEATING SIGN **REQUIRED FOR ADA COMPLIANCE**
WHEELCHAIR DECAL (INTERNATIONAL SYMBOL OF ACCESSIBILITY)
STARCRAFT WARRANTY - 5 YEAR 100,000 MILES

PRICING

Unit Price Delivered Pinetop, AZ*

\$140,276*

*Prices do not include tax, license, or DMV fees.

*Price good for 90 days.

OPTIONS

Upgrade Chassis to 300hp engine and Allison 3000 transmission

\$8,330*